



RAMA UNIVERSITY

www.ramauniversity.ac.in

FACULTY OF ENGINEERING & TECHNOLOGY

BCA-302 Computer Networks

Lecture-31

Mr. Dilip Kumar J Saini

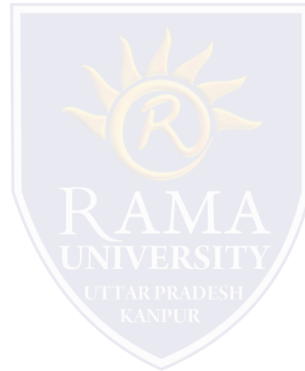
Assistant Professor

Computer Science & Engineering

OUTLINE

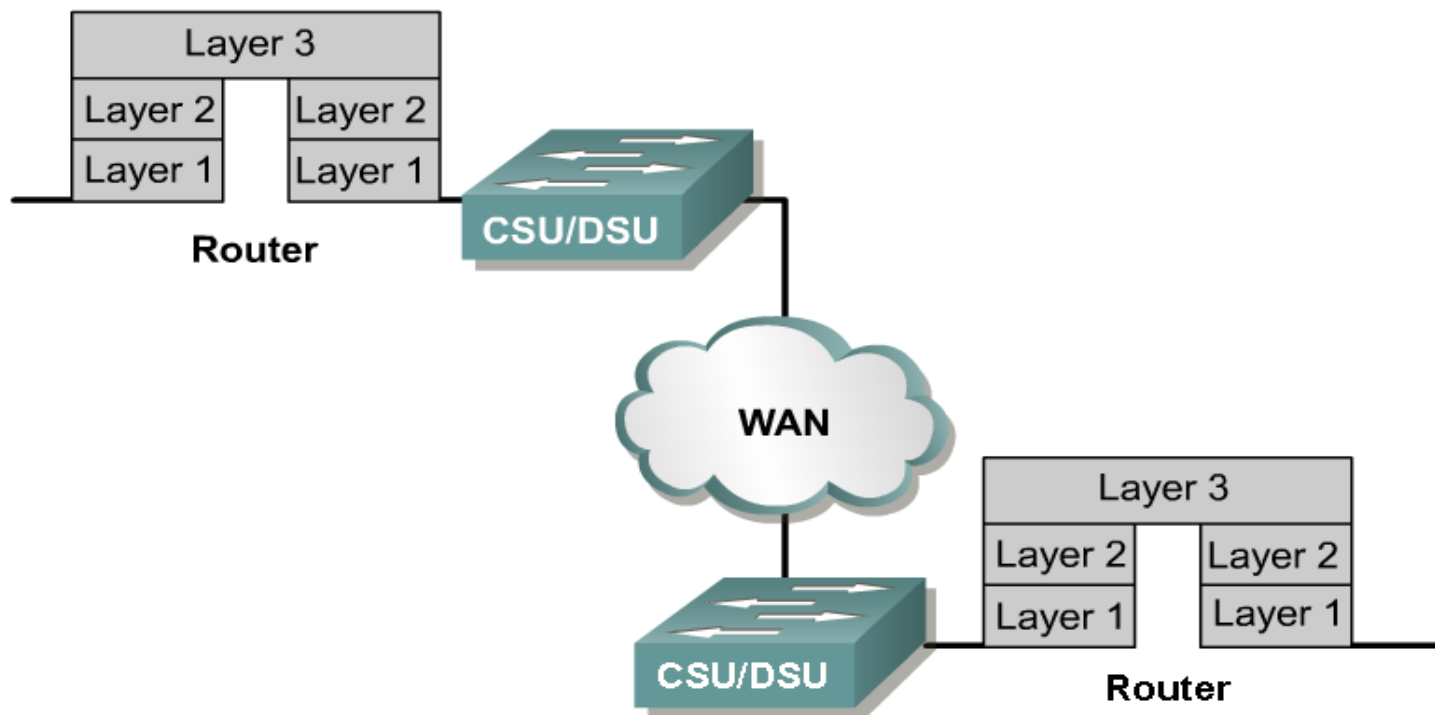
➤ WAN COMMUNICATION

➤ WAN TOPOLOGIES

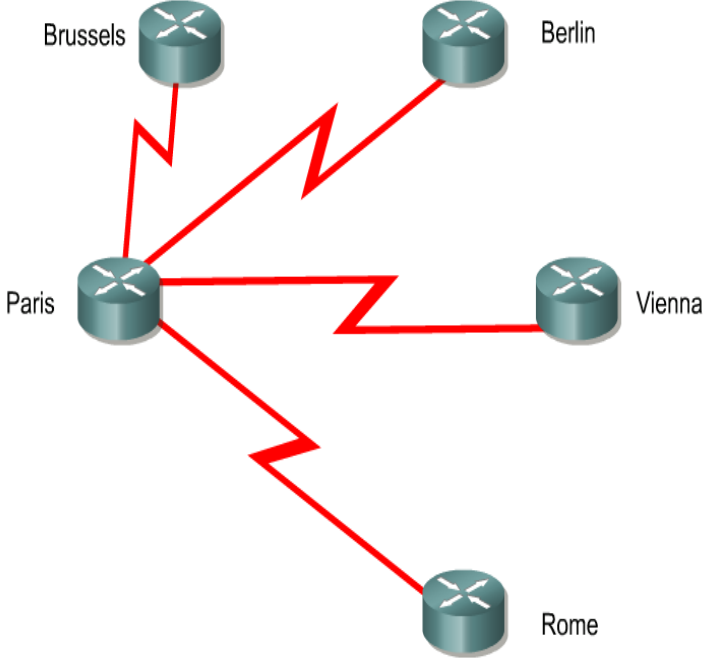


WAN COMMUNICATION

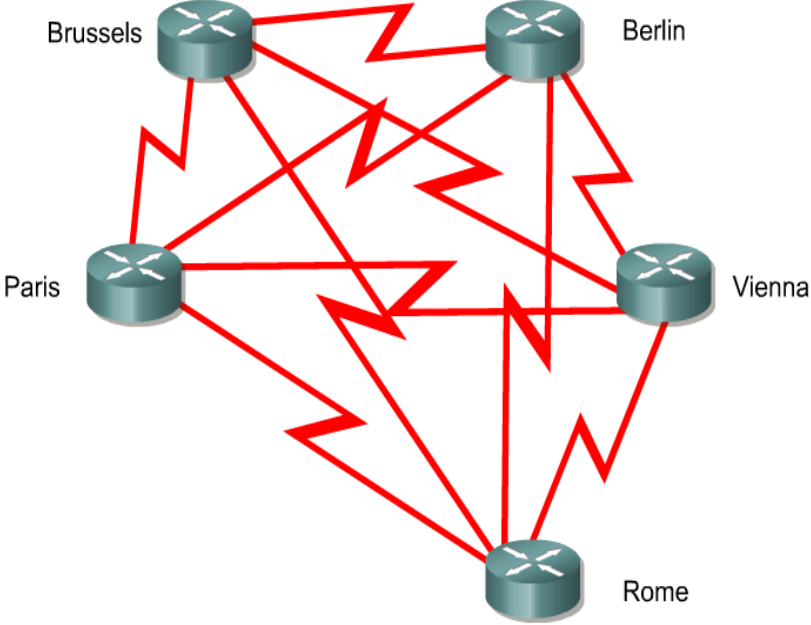
WAN protocols operate at only the lower TWO layers of the OSI stack.



WAN TOPOLOGIES

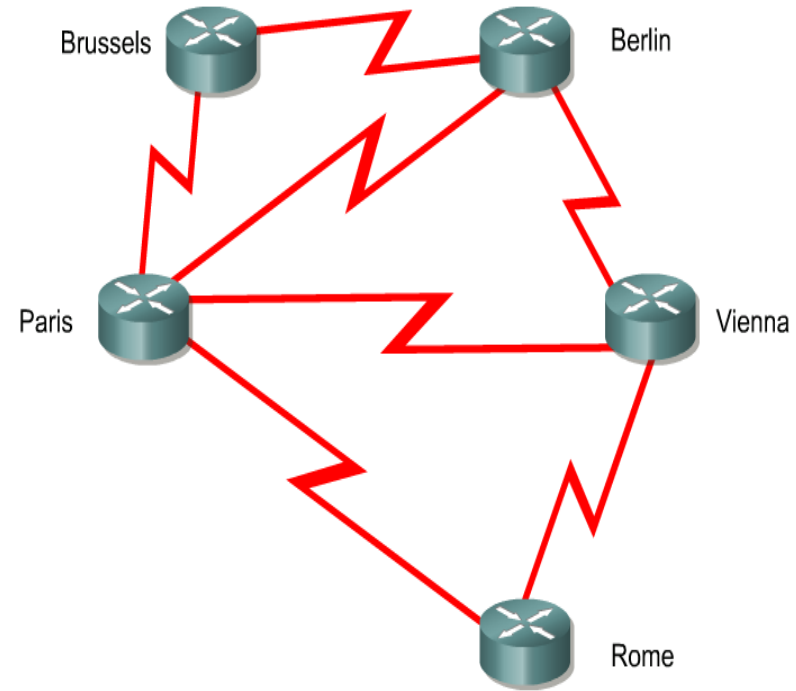


Star or Hub-and-Spoke



Full-Mesh

WAN TOPOLOGIES



Partial-Mesh

WAN TOPOLOGIES

Technology	Charge	Max Bit Rate	Other
Leased Line	Distance, capacity	Unlimited	Permanent fixed capacity
Basic Telephone	Distance, time	33 kbps	Dialed, slow connection
ISDN	Distance, capacity	64 or 128 kbps <2 Mbps, PRI	Dialed, fast connection
X.25	Volume	<48 kbps	Switched fixed capacity
Frame Relay	Capacity	<4 Mbps	Permanent variable capacity
ATM	Capacity	<155 Mbps	Permanent variable capacity

Multiple Choice Question

MUTIPLE CHOICE QUESTIONS:

Sr no	Question	Option A	Option B	OptionC	OptionD
1	Which of the following is an example of user agents for e-mail?	Microsoft Outlook	Facebook	Google	Tumblr
2	User agent does not support this _____	Composing messages	Reading messages	Replying messages	Routing messages
3	HTTP is _____ protocol.	application layer	transport layer	network layer	data link layer
4	In the network HTTP resources are located by	uniform resource identifier	unique resource locator	unique resource identifier	union resource locator
5	You need to subnet a network that has 5 subnets, each with at least 16 hosts. Which classful subnet mask would you use?	255.255.255.192	255.255.255.224	255.255.255.240	255.255.255.252

REFERENCES

- <http://www.engppt.com/2009/12/networking-fourzan-ppt-slides.html>

