



# RAMA UNIVERSITY

www.ramauniversity.ac.in

## FACULTY OF ENGINEERING & TECHNOLOGY

### BCA-302 Computer Networks

### Lecture-37

Mr. Dilip Kumar J Saini

Assistant Professor

Computer Science & Engineering

# OUTLINE

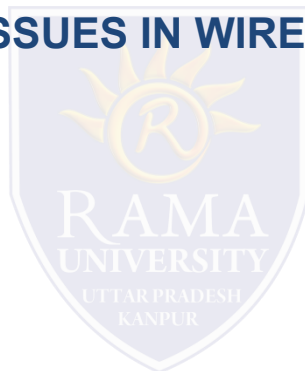
➤ THE NETSTAT COMMAND

➤ THE NSLOOKUP COMMAND

➤ HARDWARE AND CONNECTION ISSUES IN WIRED & WIRELESS NETWORKS

➤ LED INDICATORS

➤ CABLE ISSUES



# THE NETSTAT COMMAND

Views open connections on a host

Informs user about:

- protocols
- local address
- port numbers
- connection state

```
E:\WINDOWS\system32\cmd.exe
C:\Documents and Settings\Corey>netstat -a

Active Connections

Proto Local Address           Foreign Address         State
TCP   beat you:epmap          beat you:0              LISTENING
TCP   beat you:microsoft-ds  beat you:0              LISTENING
TCP   beat you:2869          beat you:0              LISTENING
TCP   beat you:5190          beat you:0              LISTENING
TCP   beat you:5193          beat you:0              LISTENING
TCP   beat you:1025          beat you:0              LISTENING
TCP   beat you:1213          localhost:1214          ESTABLISHED
TCP   beat you:1214          localhost:1213          ESTABLISHED
TCP   beat you:5180          beat you:0              LISTENING
TCP   beat you:6999          beat you:0              LISTENING
TCP   beat you:netbios-ssn   beat you:0              LISTENING
UDP   beat you:microsoft-ds *:*
UDP   beat you:lsaknp       *:*
UDP   beat you:1026         *:*
UDP   beat you:1085         *:*
UDP   beat you:1243         *:*
UDP   beat you:1249         *:*
UDP   beat you:1254         *:*
UDP   beat you:2307         *:*
UDP   beat you:4500         *:*
UDP   beat you:40116        *:*
UDP   beat you:ntp          *:*
UDP   beat you:1031         *:*
UDP   beat you:1120         *:*
UDP   beat you:1900         *:*
UDP   beat you:4421         *:*
UDP   beat you:ntp          *:*
UDP   beat you:netbios-ns   *:*
UDP   beat you:netbios-dgm *:*
UDP   beat you:1900         *:*

C:\Documents and Settings\Corey>
```

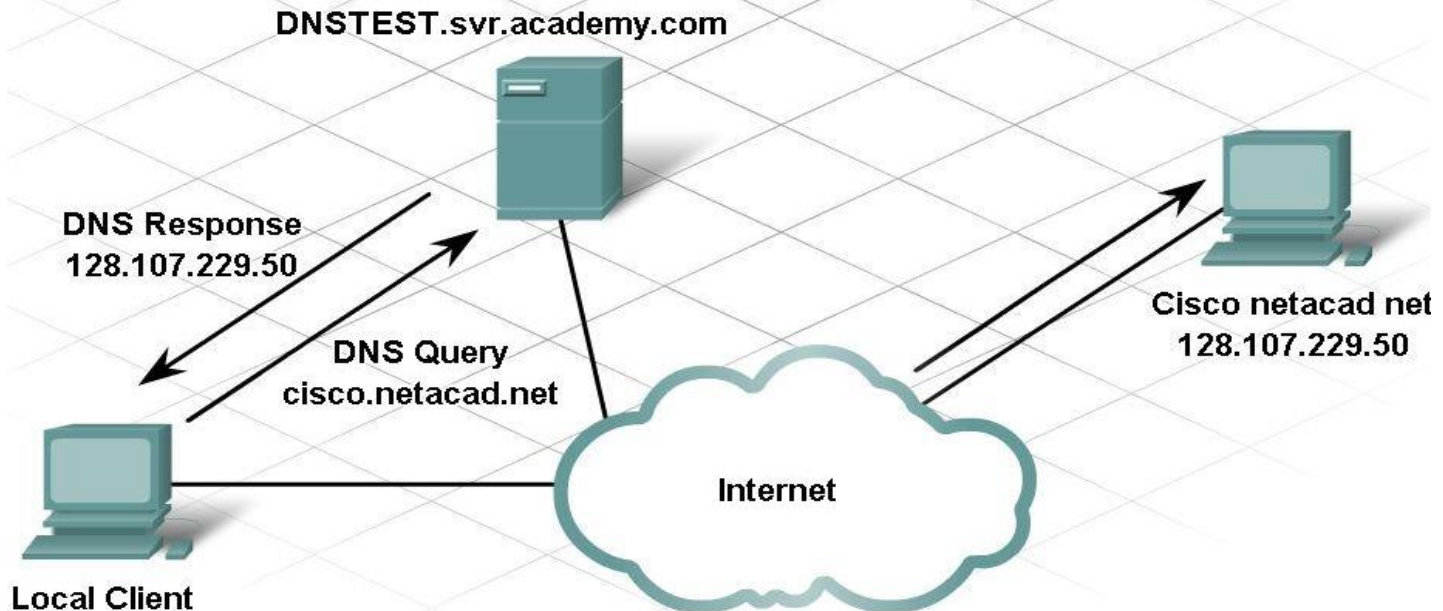
# THE NSLOOKUP COMMAND

Allows end user to look up information about DNS name and DNS server

Used as a troubleshooting tool to see if DNS server has the correct IP with the correct name

```
C:\>nslookup cisco.netacad.net
Server: TOROON12NSC15.svr.bell.ca
Address: 67.69.184.139

Non-authoritative answer:
Name:   cisco.netacad.net
Address: 128.107.229.50
```

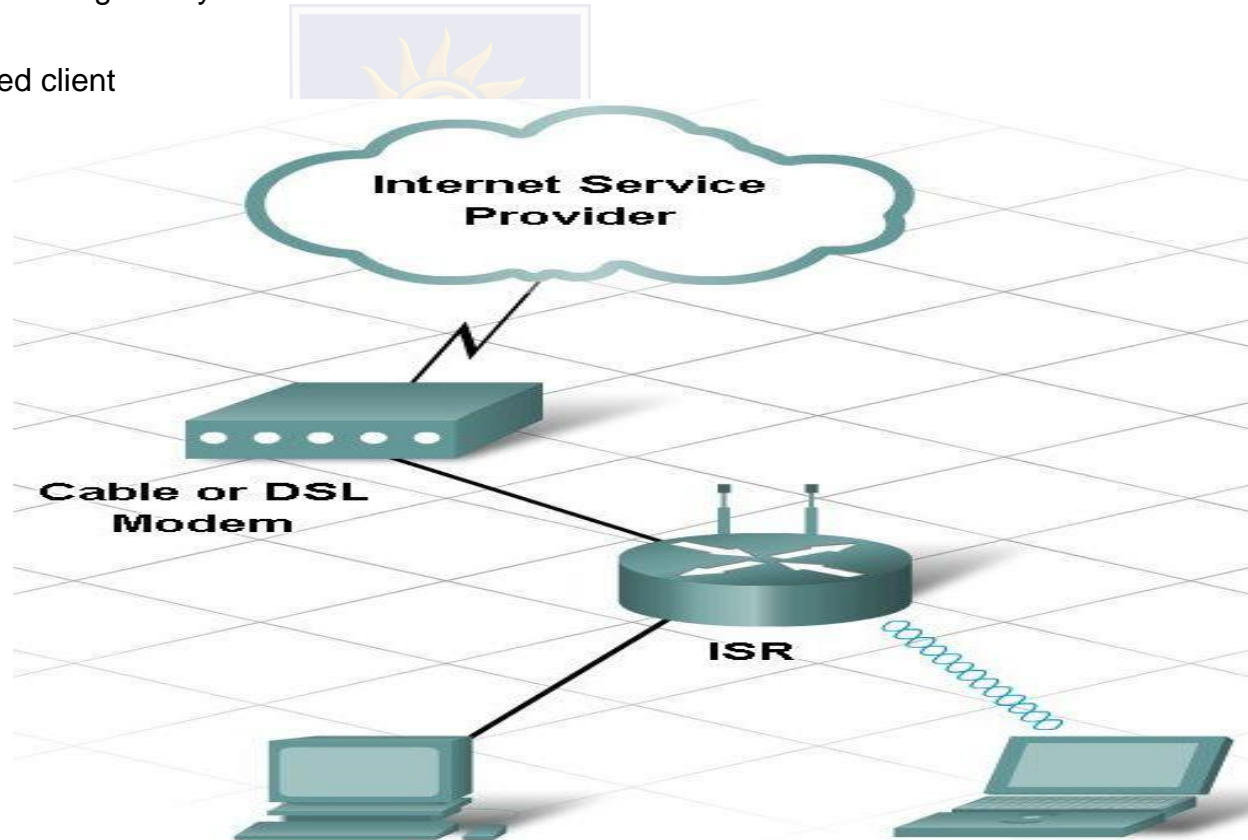


# HARDWARE AND CONNECTION ISSUES IN WIRED & WIRELESS NETWORKS

## Use divide-and-conquer technique

To determine where the problem exists:

- ping from wireless client to default gateway
- ping from wired client to default gateway
- ping wireless client to wired client



# LED INDICATORS

Used to show activity

## Security LED

solid green = security enabled

## Link Lights

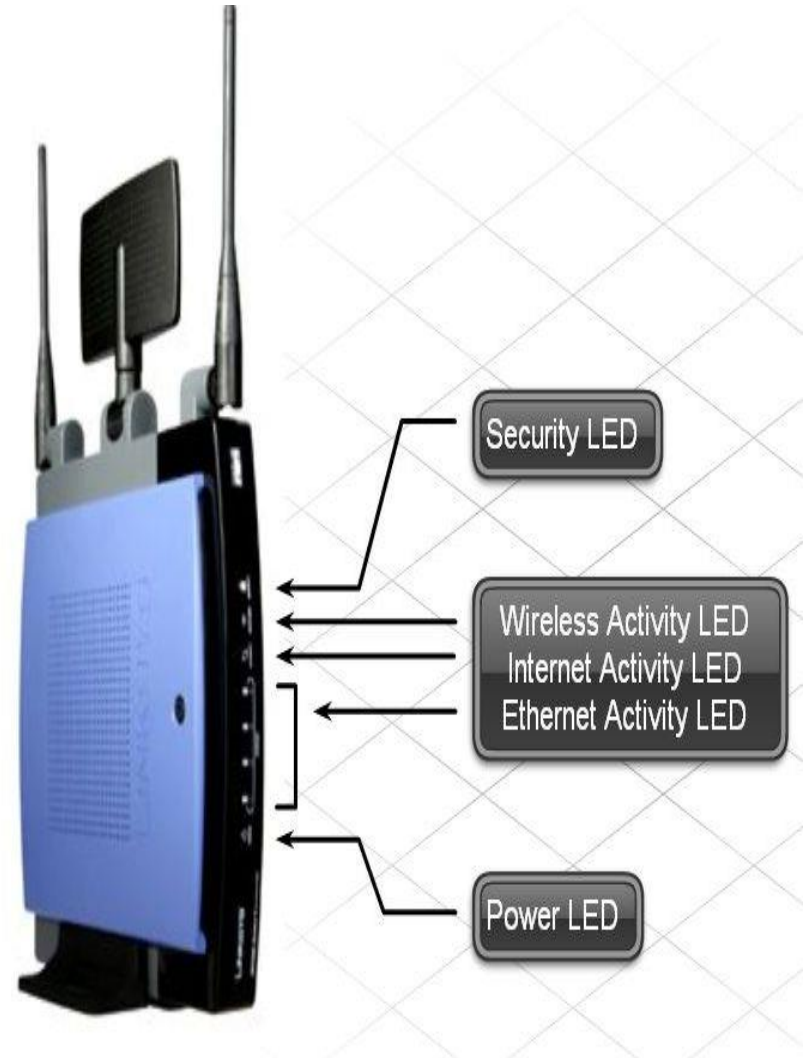
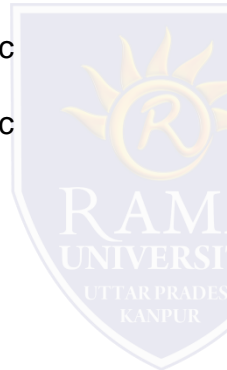
solid green = plugged in with no traffic

flashing green = plugged in with traffic

amber = making adjustments

## Power LED

solid green = operational

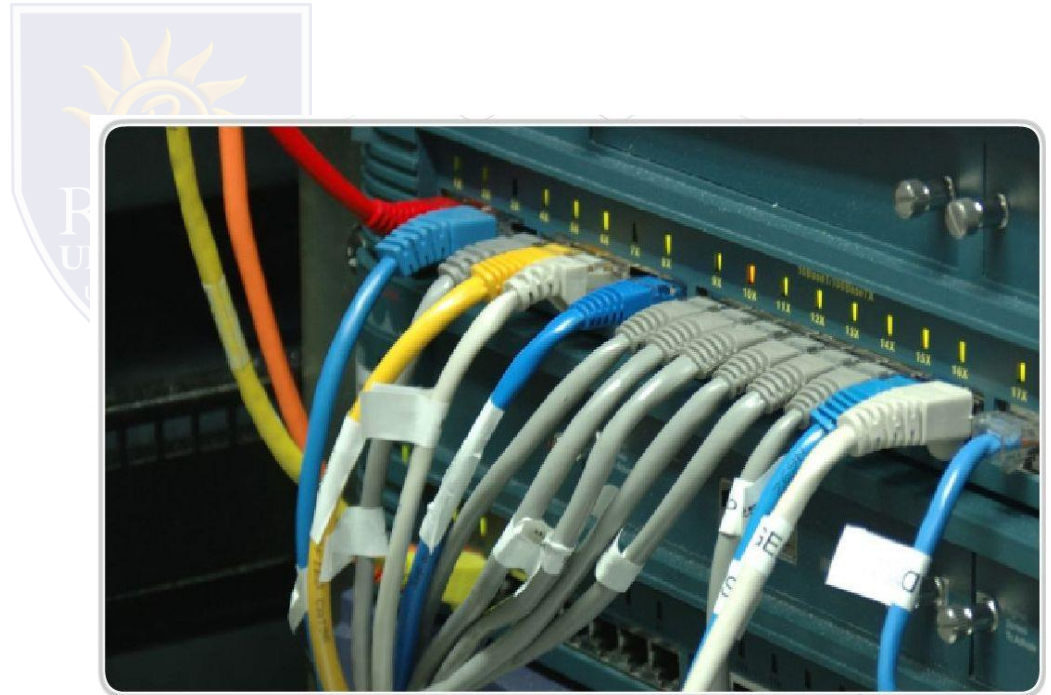


# CABLE ISSUES

**One of the most common problems**

**Check for:**

- correct cable type
- improper cable termination
- too long of cable runs
- verify correct ports
- protect cables from damage





# Multiple Choice Question

## MUTIPLE CHOICE QUESTIONS:

Sr no	Question	Option A	Option B	OptionC	OptionD
1	Dynamic web page _____	is same every time whenever it displays	generates on demand by a program or a request from browser	both is same every time whenever it displays and generates on demand by a program or a request from browser	is different always in a predefined order
2	What is a web browser?	a program that can display a web page	a program used to view html documents	it enables user to access the resources of internet	all of the mentioned
3	Common gateway interface is used to _____	generate executable files from web content by web server	generate web pages	stream videos	download media file
4	URL stands for _____	unique reference label	uniform reference label	uniform resource locator	unique resource locator
5	A web cookie is a small piece of data that is _____	sent from a website and stored in user's web browser while a user is browsing a website	sent from user and stored in the server while a user is browsing a website	sent from root server to all servers	sent from the root server to other root servers



# REFERENCES

- <http://www.engppt.com/2009/12/networking-fourzan-ppt-slides.html>

