



## FACULTY OF ENGINEERING & TECHNOLOGY

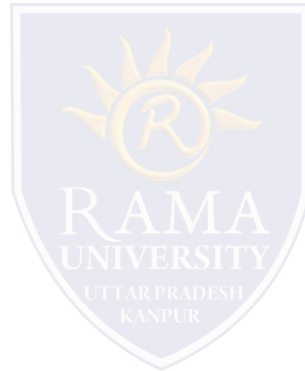
**Brajesh Mishra**

Assistant Professor

Department of Computer Science & Engineering

# Topics Covered

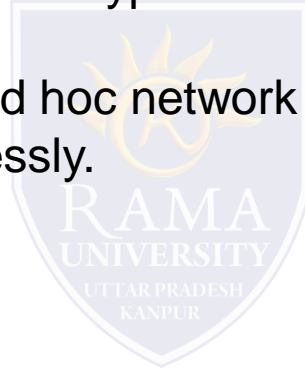
## Classifications of Ad Hoc Networks



# Classifications of Ad Hoc Networks

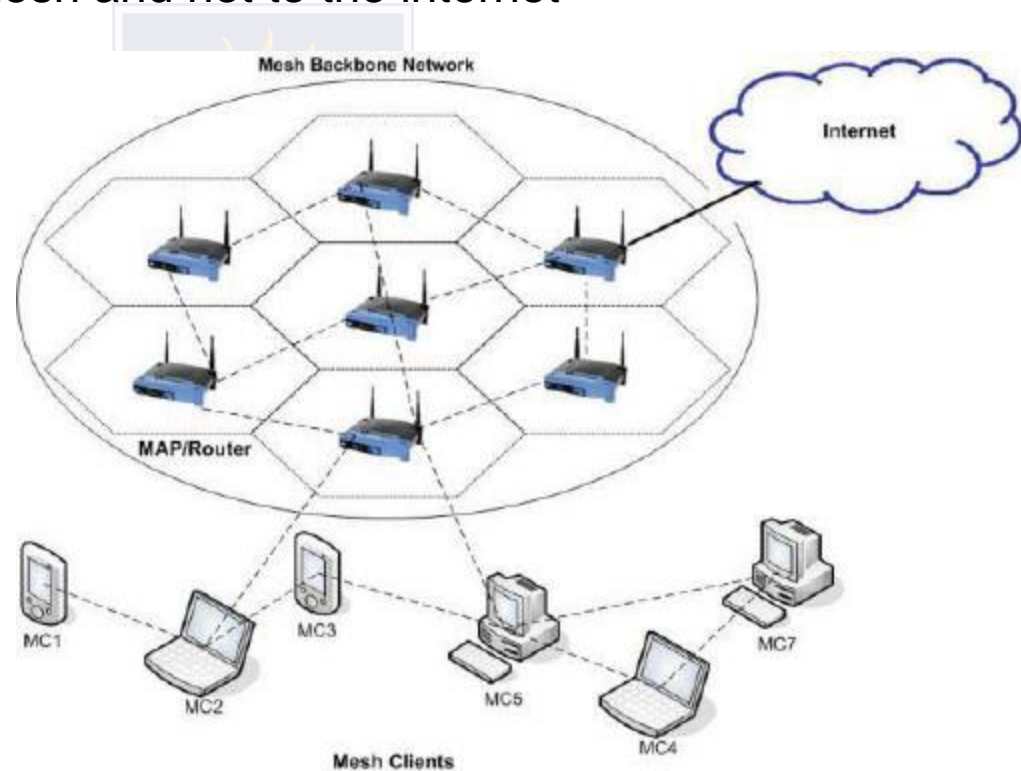
The self-supporting nature of ad hoc networks makes them quite useful in situations such as natural disasters, emergency military operations, or even to just quickly transfer information between two computers at home. However, in spite of such ease of use and scalability, there are physical and performance limitations to an ad hoc network in the practical world. The types of ad hoc networks are as follows:

Mobile ad hoc networks A mobile ad hoc network (MANET) is a self forming network of mobile devices connected wirelessly.



## □ Wireless mesh networks

A wireless mesh network (WMN) is a communications network of radio nodes structured in a mesh topology. The clients within the network are usually laptops, mobile phones, and other wireless equipment. The mesh network, with the help of routers and gateways, transmits data to and from the wireless devices. The communication is within the mesh and not to the internet



# Wireless sensor networks

A wireless sensor network (WSN) employs sensor based devices to jointly observe physical or environmental settings such as sound, pressure, climatic changes, and so on. Wireless sensor networks are used in a wide range of areas: traffic control, vehicle detection, greenhouse monitoring and so on.

