



RAMA UNIVERSITY

www.ramauniversity.ac.in

FACULTY OF ENGINEERING & TECHNOLOGY

DCS-503 Computer Networks

Lecture-12

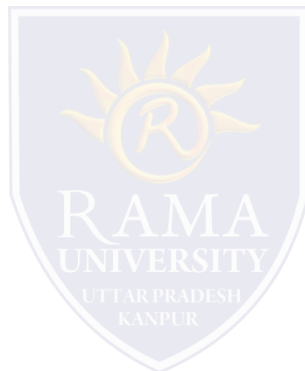
Mr. Dilip Kumar J Saini

Assistant Professor

Computer Science & Engineering

OUTLINE

- **SERVICE PRIMITIVES**
- **THE RELATIONSHIP OF SERVICE**
- **THE OSI REFERENCE MODEL**
- **THE TCP/IP REFERENCE MODEL**



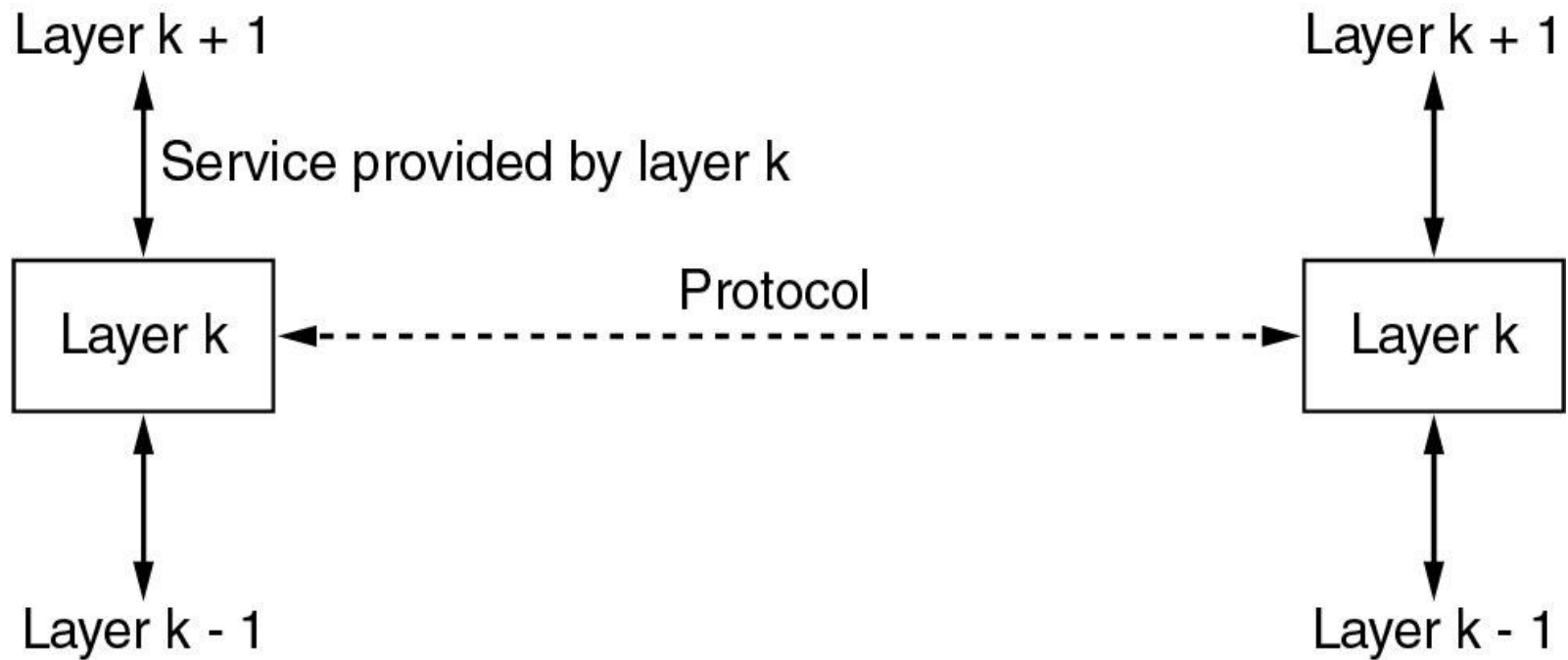
SERVICE PRIMITIVES

A service is formally specified by a set of primitives (basic operations) available to a user or other entity to access the service

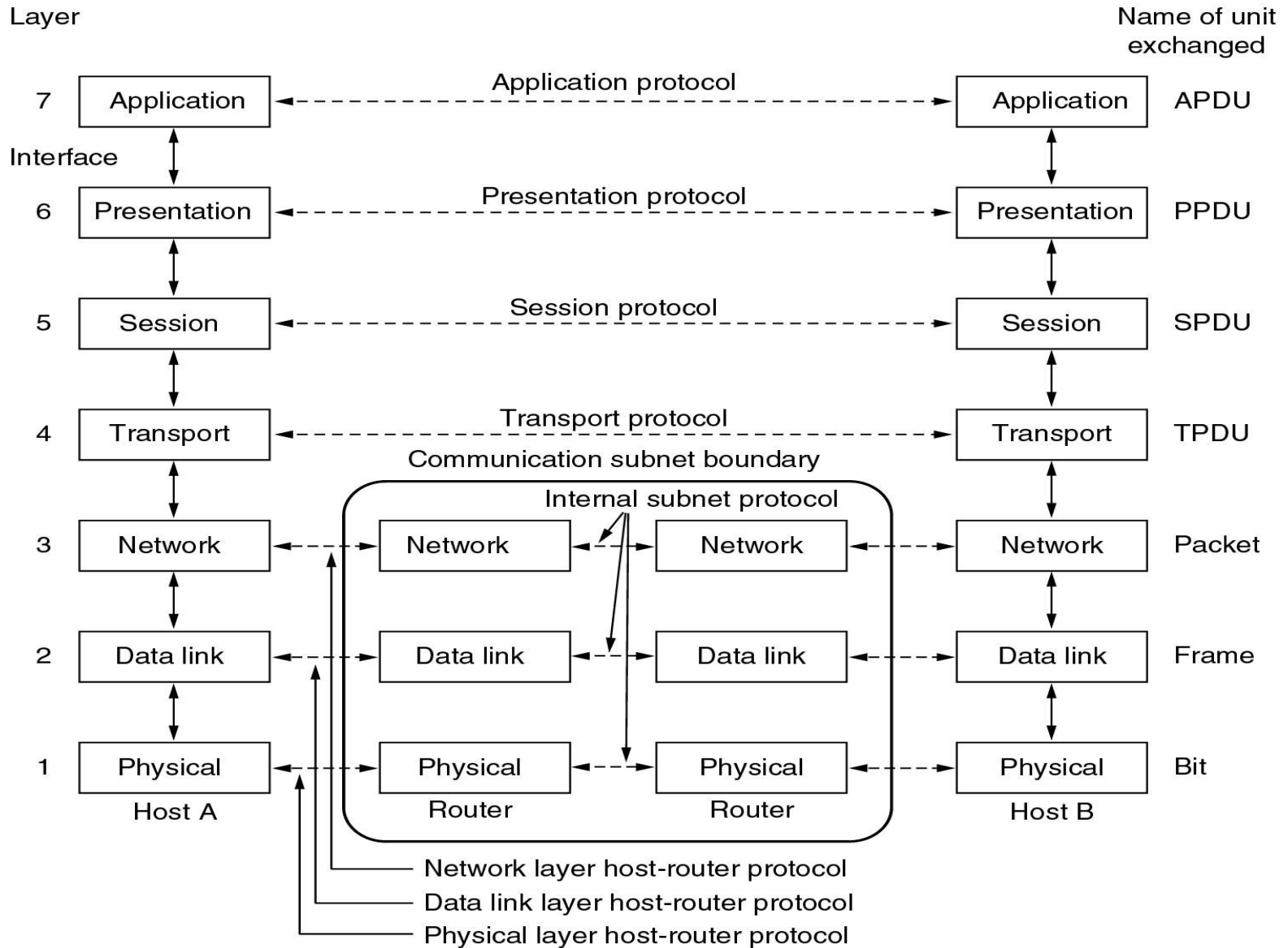
Primitive	Meaning
LISTEN	Block waiting for an incoming connection
CONNECT	Establish a connection with a waiting peer
RECEIVE	Block waiting for an incoming message
SEND	Send a message to the peer
DISCONNECT	Terminate a connection

Example: five service primitives for implementing a simple connection-oriented service

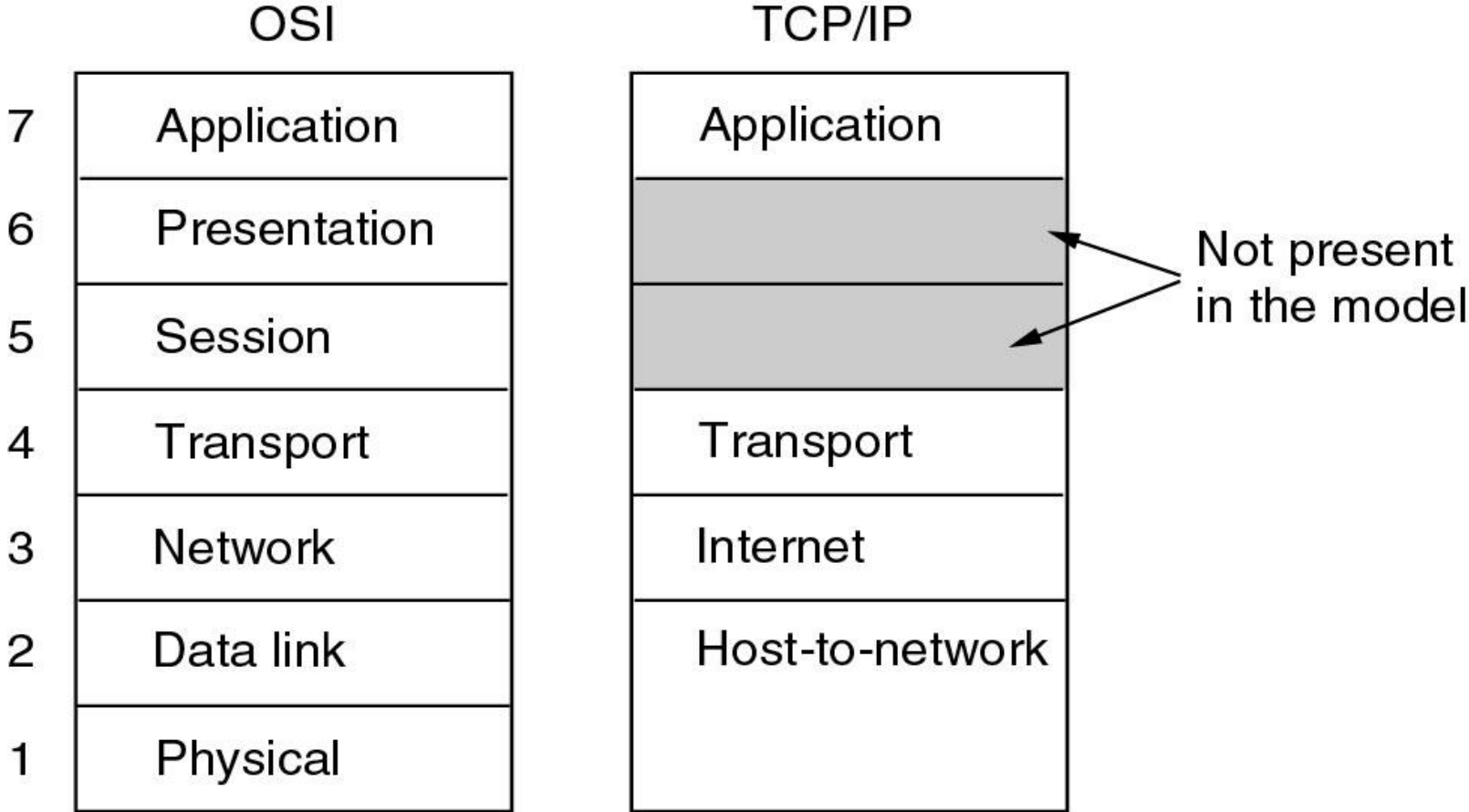
THE RELATIONSHIP OF SERVICE



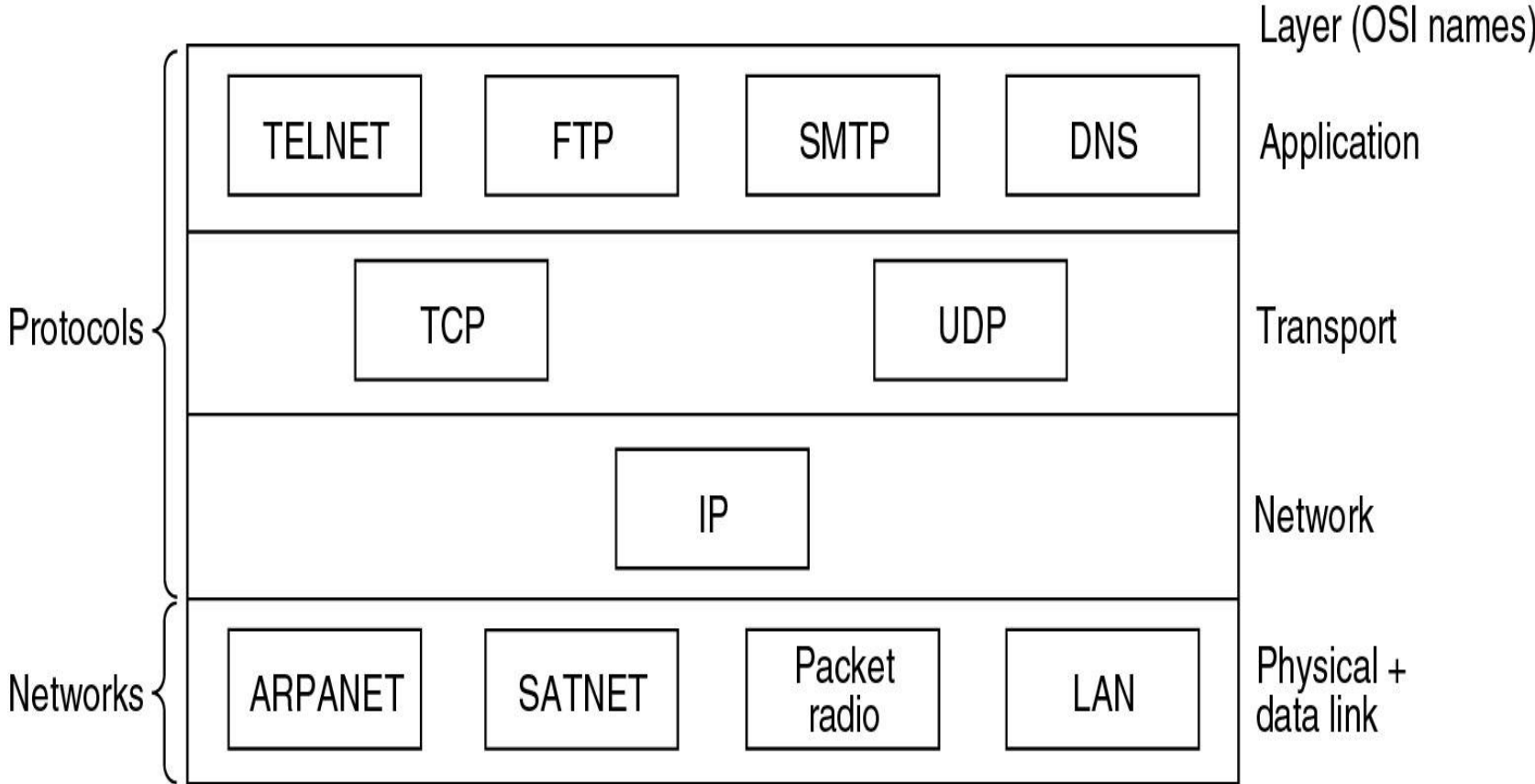
THE OSI REFERENCE MODEL



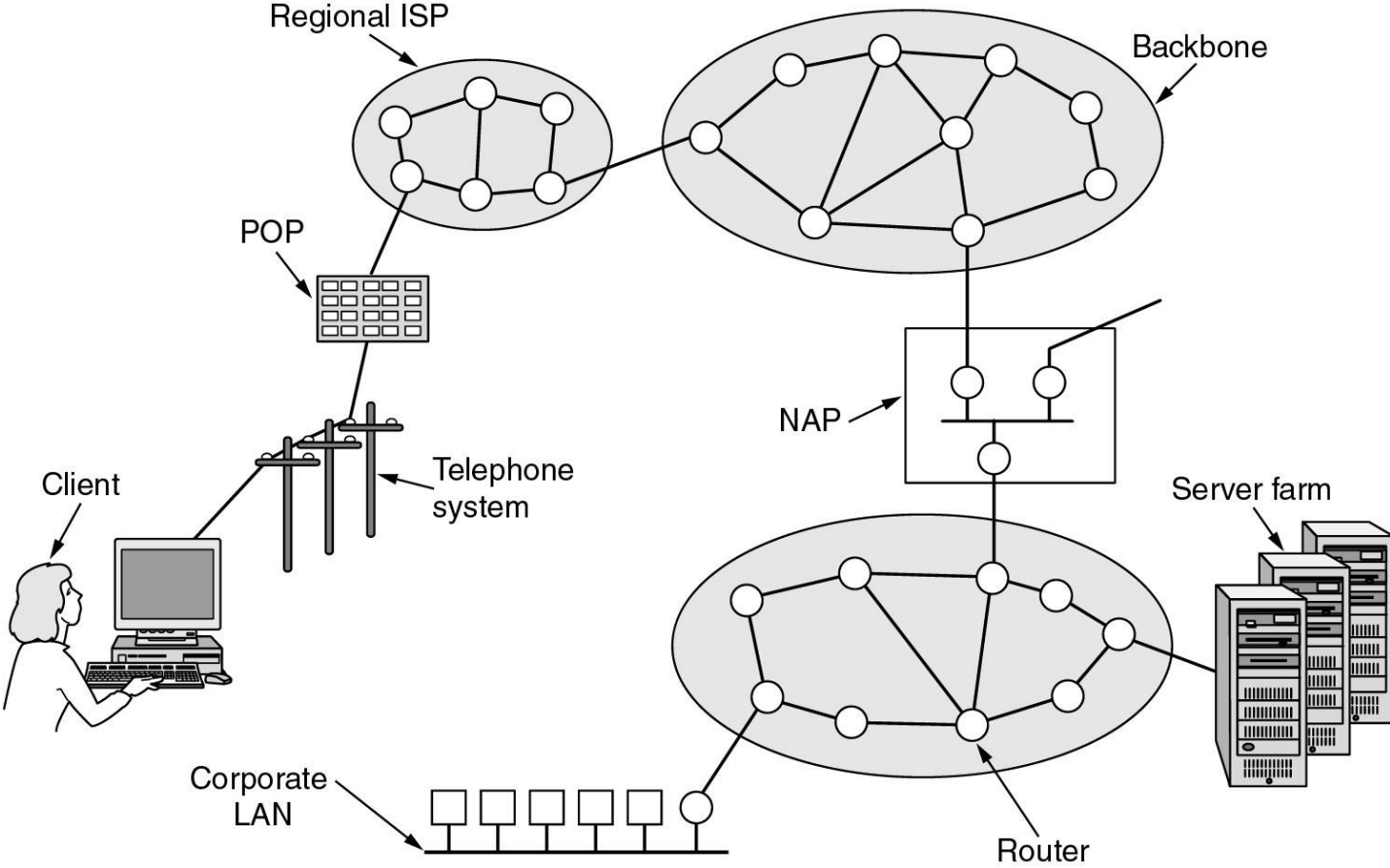
THE TCP/IP REFERENCE MODEL



THE TCP/IP REFERENCE MODEL



THE TCP/IP REFERENCE MODEL(INTERNET)



Multiple Choice Question

MUTIPLE CHOICE QUESTIONS:

Sr no	Question	Option A	Option B	OptionC	OptionD
1	Which of this is not a constituent of residential telephone line?	A high-speed downstream channel	A medium-speed downstream channel	A low-speed downstream channel	An ultra-high speed downstream channel
2	Home Access is provided by _____	DSL	FTTP	Cable	All of the mentioned
3	OSI stands for _____	open system interconnection	operating system interface	optical service implementation	open service Internet
4	The number of layers in ISO OSI reference model is _____	4	5	6	7
5	TCP/IP model does not have _____ layer but OSI model have this layer.	session layer	transport layer	application layer	network layer

REFERENCES

- <http://www.engppt.com/2009/12/networking-fourzan-ppt-slides.html>

