



RAMA UNIVERSITY

www.ramauniversity.ac.in

FACULTY OF ENGINEERING & TECHNOLOGY

DCS-503 Computer Networks

Lecture-28

Mr. Dilip Kumar J Saini

Assistant Professor

Computer Science & Engineering

OUTLINE

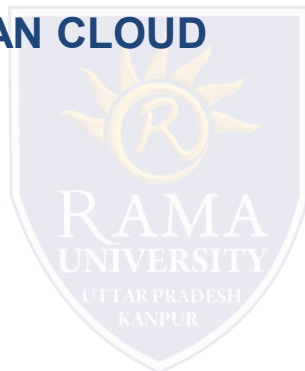
➤ **CIRCUIT SWITCHED**

➤ **PACKET SWITCHING**

➤ **USING LEASED LINES TO THE WAN CLOUD**

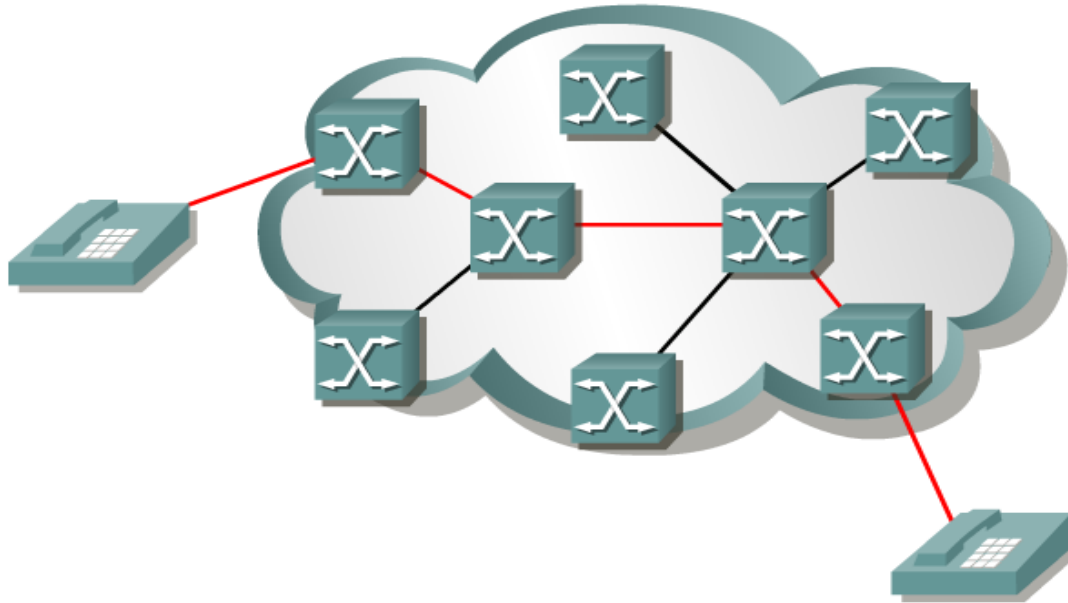
➤ **ANALOG DIALUP**

➤ **ISDN**



CIRCUIT SWITCHED

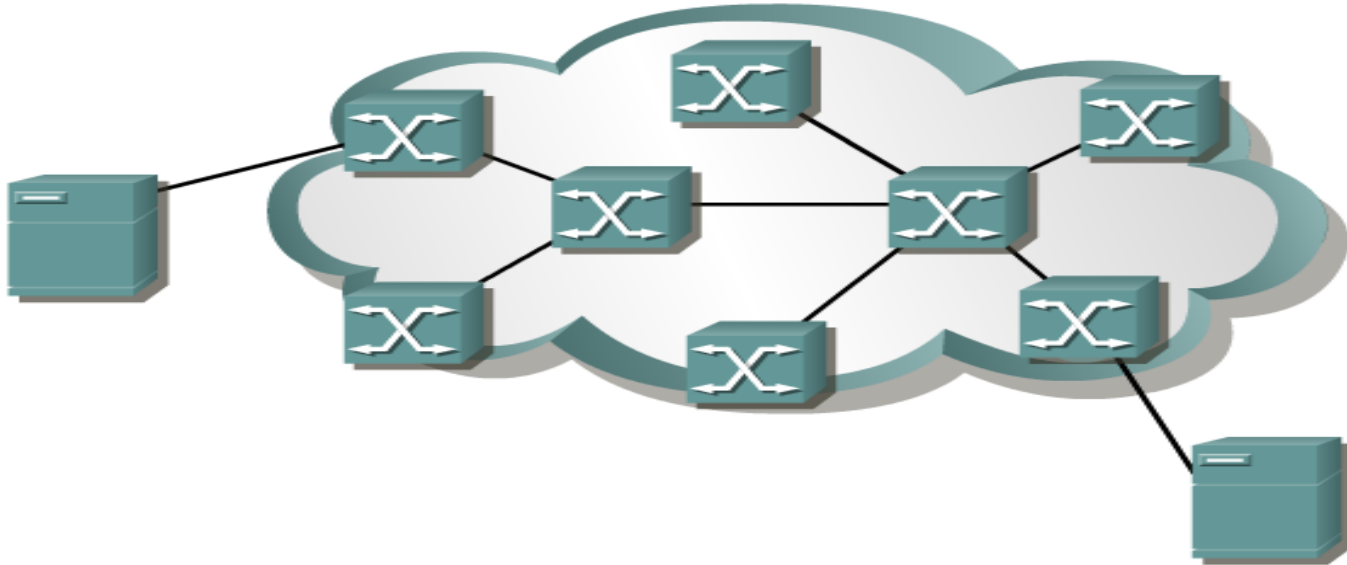
POTS, ISDN



- When a subscriber makes a telephone call (or ISDN), the dialed number is used to set switches in the exchanges along the route of the call so that there is a continuous circuit from the originating caller to that of the called party.
- The internal path taken by the circuit between exchanges is shared by a number of conversations.
- Time division multiplexing (TDM) is used to give each conversation a share of the connection in turn.
- TDM assures that a fixed capacity connection is made available to the subscriber.

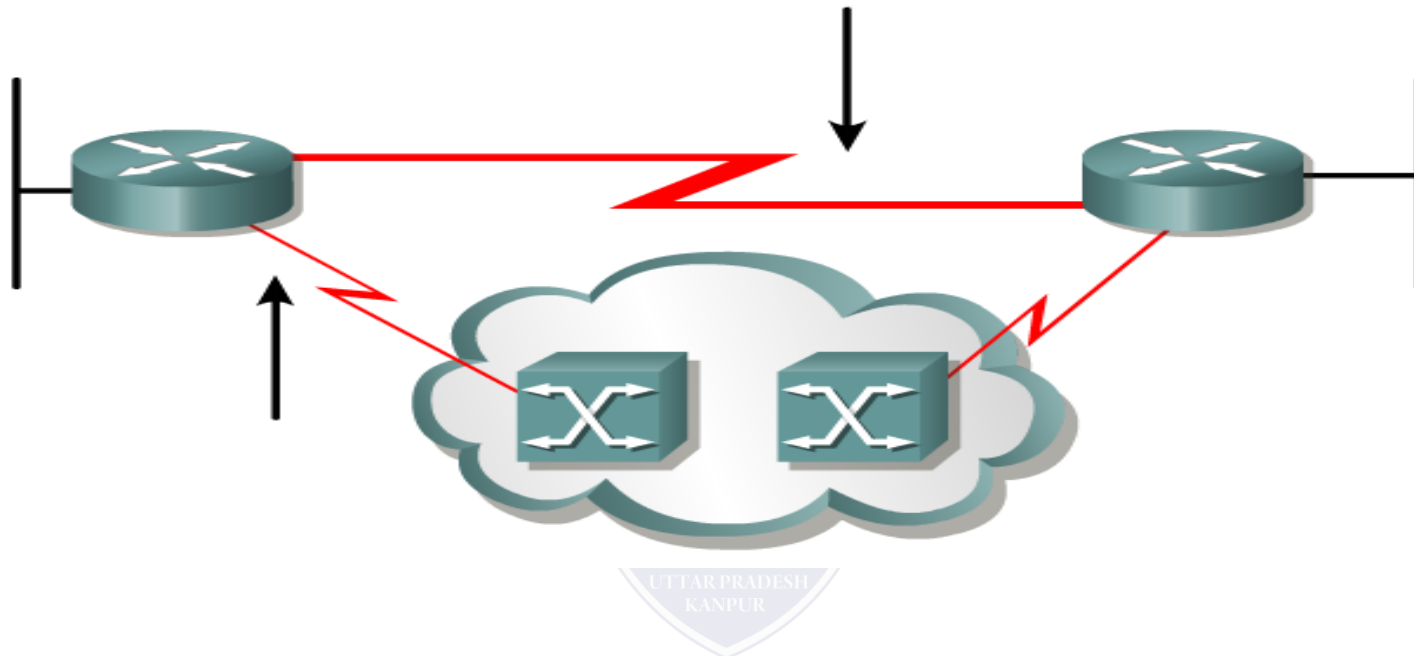
PACKET SWITCHING

Frame Relay, X.25, ATM



- Packet-switched describes the type of network in which relatively small units of data called packets are routed through a network based on the destination address contained within each packet.
- Packet Switching allows the same data path to be shared among many users in the network.
- This type of communication between sender and receiver is known as *connectionless* (rather than *dedicated*).
- Most traffic over the Internet uses packet switching and the Internet is basically a connectionless network

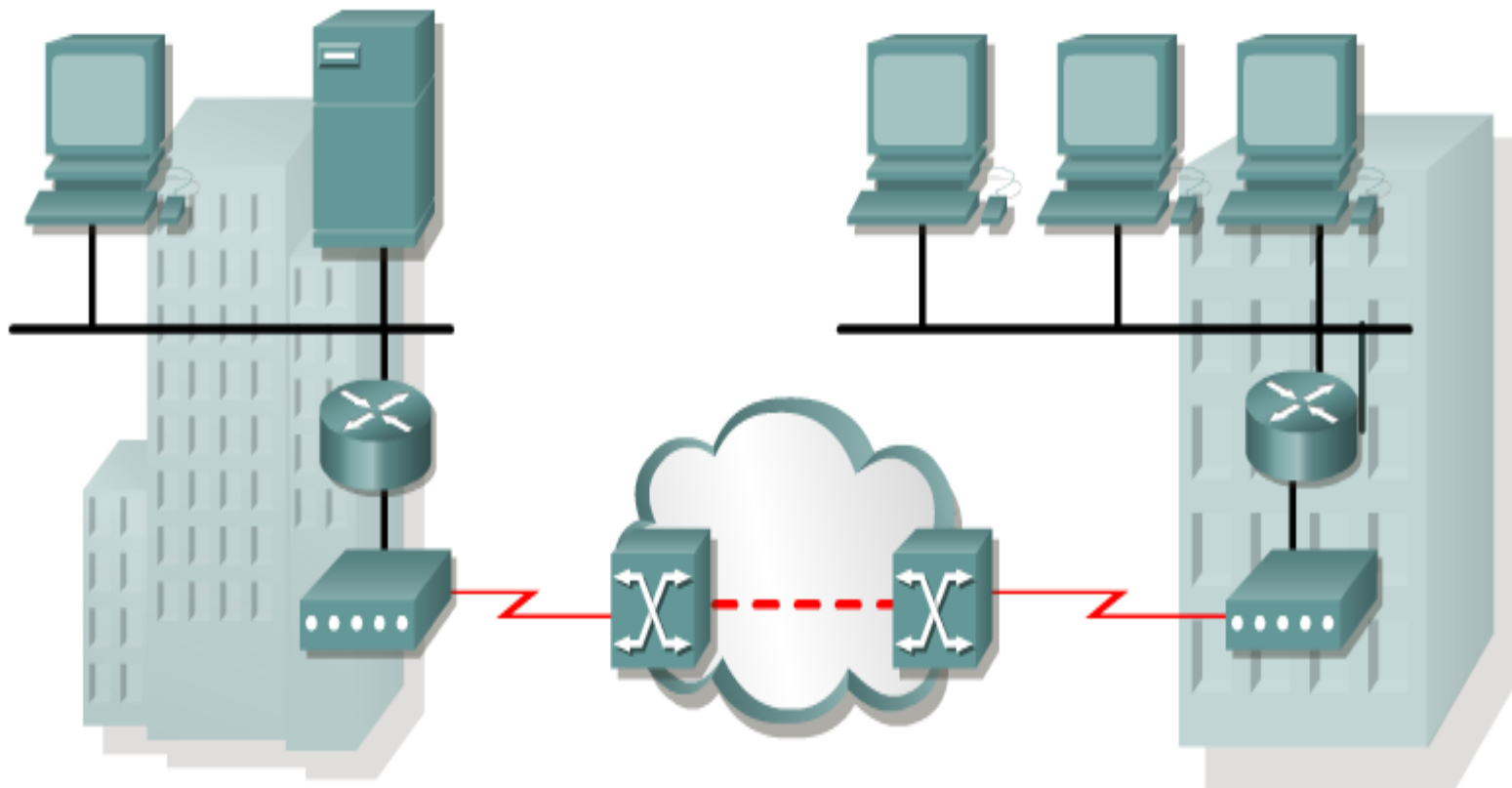
USING LEASED LINES TO THE WAN CLOUD



- To connect to a packet-switched network, a subscriber needs a local loop to the nearest location where the provider makes the service available.
- This is called the **point-of-presence (POP)** of the service.
- Normally this will be a **dedicated leased line**.
- This line will be much shorter than a leased line directly connected to the subscriber locations, and often carries several VCs.
- Since it is likely that not all the VCs will require maximum demand simultaneously, the capacity of the leased line can be smaller than the sum of the individual VCs

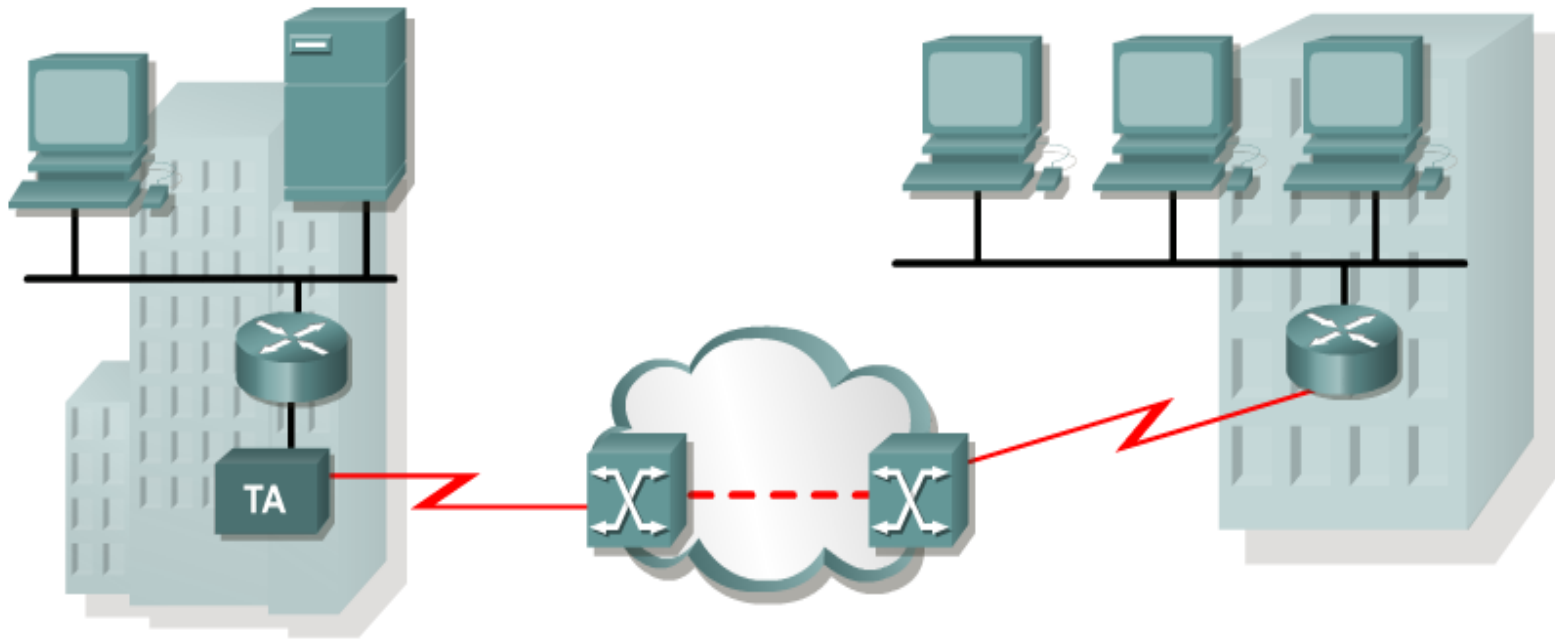
ANALOG DIALUP

When intermittent, low-volume data transfers are needed, modems and analog dialed telephone lines provide low capacity and dedicated switched connections



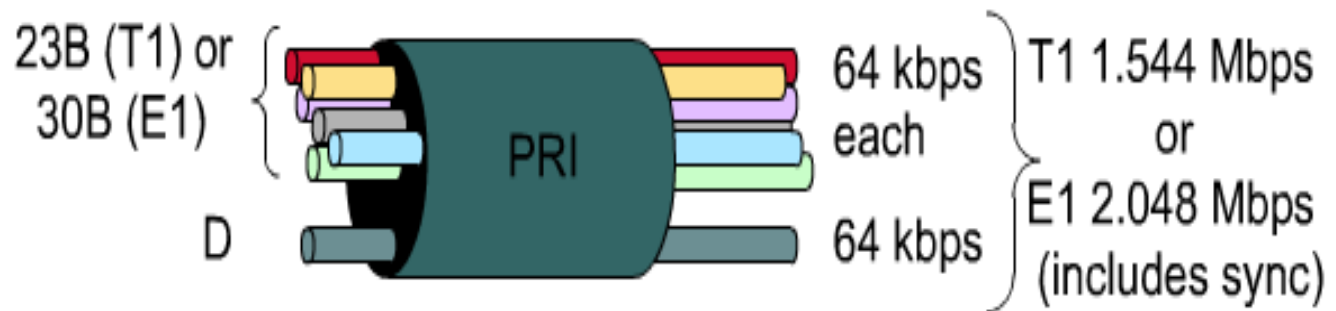
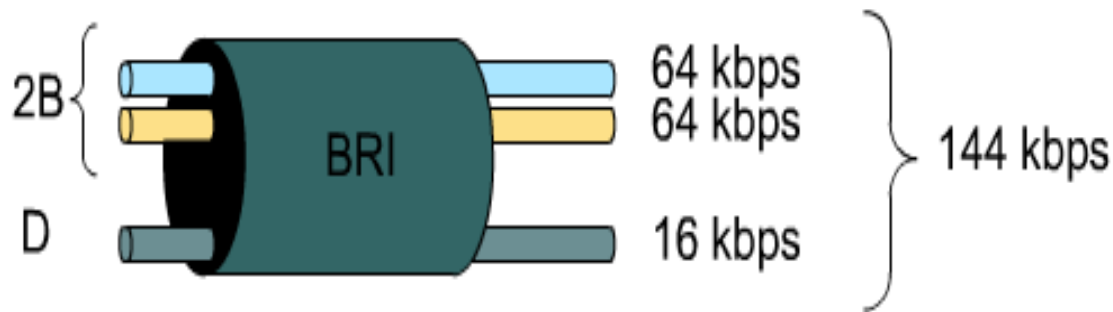
ISDN

Integrated Services Digital Network (ISDN) turns the local loop into a TDM digital connection.



ISDN

- The connection uses 64 kbps bearer channels (B) for carrying voice or data and a signaling, delta channel (D) for call set-up and other purposes.
- Never really became popular in the U.S., known as It-Still-Does-Nothing or I-Still-Don't Know



Multiple Choice Question

MUTIPLE CHOICE QUESTIONS:

Sr no	Question	Option A	Option B	OptionC	OptionD
1	Which of the following is an example of user agents for e-mail?	Microsoft Outlook	Facebook	Google	Tumblr
2	User agent does not support this _____	Composing messages	Reading messages	Replying messages	Routing messages
3	HTTP is _____ protocol.	application layer	transport layer	network layer	data link layer
4	In the network HTTP resources are located by	uniform resource identifier	unique resource locator	unique resource identifier	union resource locator
5	You need to subnet a network that has 5 subnets, each with at least 16 hosts. Which classful subnet mask would you use?	255.255.255.192	255.255.255.224	255.255.255.240	255.255.255.252

REFERENCES

- <http://www.engppt.com/2009/12/networking-fourozan-ppt-slides.html>

