



RAMA UNIVERSITY

www.ramauniversity.ac.in

FACULTY OF ENGINEERING & TECHNOLOGY

DCS-503 Computer Networks

Lecture-33

Mr. Dilip Kumar J Saini

Assistant Professor

Computer Science & Engineering

OUTLINE

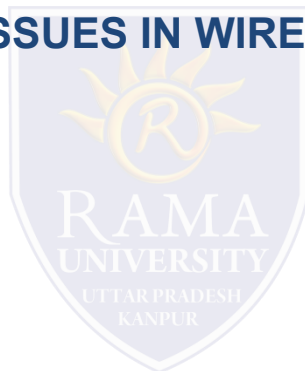
➤ THE NETSTAT COMMAND

➤ THE NSLOOKUP COMMAND

➤ HARDWARE AND CONNECTION ISSUES IN WIRED & WIRELESS NETWORKS

➤ LED INDICATORS

➤ CABLE ISSUES



THE NETSTAT COMMAND

Views open connections on a host

Informs user about:

- protocols
- local address
- port numbers
- connection state

```
E:\WINDOWS\system32\cmd.exe
C:\Documents and Settings\Corey>netstat -a

Active Connections

Proto Local Address           Foreign Address         State
TCP   beat you:epmap          beat you:0              LISTENING
TCP   beat you:microsoft-ds  beat you:0              LISTENING
TCP   beat you:2869          beat you:0              LISTENING
TCP   beat you:5190          beat you:0              LISTENING
TCP   beat you:5193          beat you:0              LISTENING
TCP   beat you:1025          beat you:0              LISTENING
TCP   beat you:1213          localhost:1214          ESTABLISHED
TCP   beat you:1214          localhost:1213          ESTABLISHED
TCP   beat you:5180          beat you:0              LISTENING
TCP   beat you:6999          beat you:0              LISTENING
TCP   beat you:netbios-ssn   beat you:0              LISTENING
UDP   beat you:microsoft-ds  *:*                     *:*
UDP   beat you:lsaknp        *:*                     *:*
UDP   beat you:1026          *:*                     *:*
UDP   beat you:1085          *:*                     *:*
UDP   beat you:1243          *:*                     *:*
UDP   beat you:1249          *:*                     *:*
UDP   beat you:1254          *:*                     *:*
UDP   beat you:2307          *:*                     *:*
UDP   beat you:4500          *:*                     *:*
UDP   beat you:40116         *:*                     *:*
UDP   beat you:ntp           *:*                     *:*
UDP   beat you:1031          *:*                     *:*
UDP   beat you:1120          *:*                     *:*
UDP   beat you:1900          *:*                     *:*
UDP   beat you:4421          *:*                     *:*
UDP   beat you:ntp           *:*                     *:*
UDP   beat you:netbios-ns    *:*                     *:*
UDP   beat you:netbios-dgm   *:*                     *:*
UDP   beat you:1900          *:*                     *:*

C:\Documents and Settings\Corey>
```

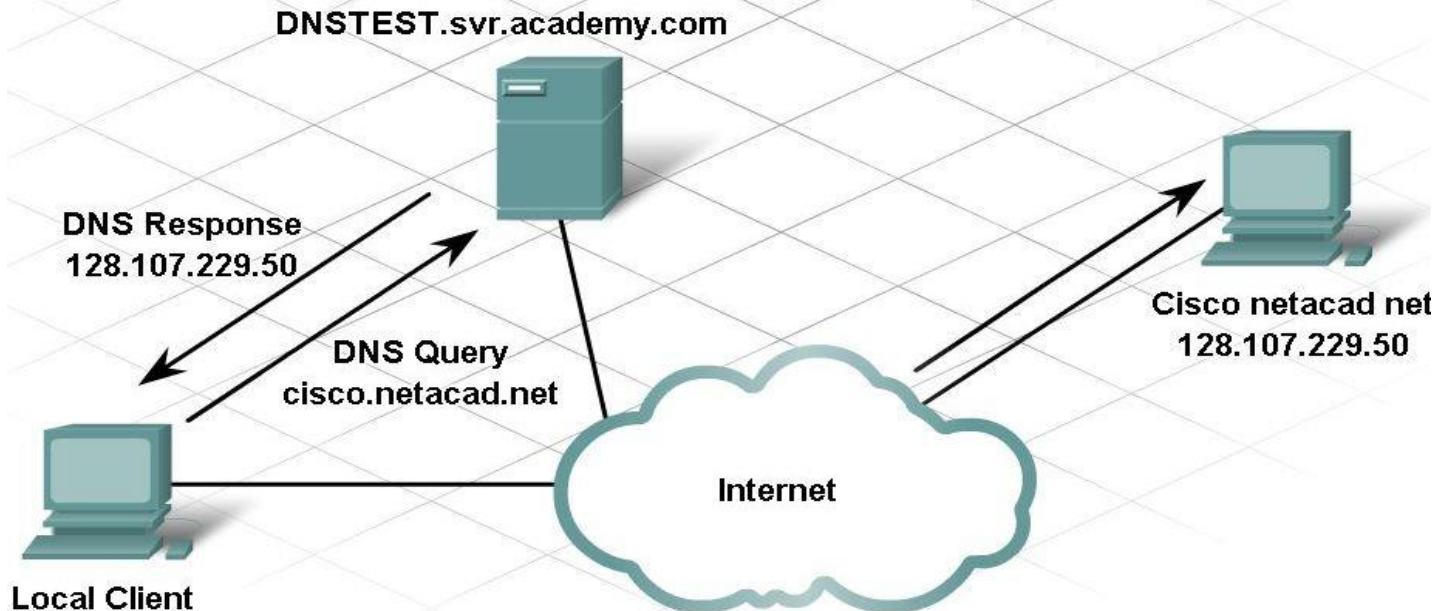
THE NSLOOKUP COMMAND

Allows end user to look up information about DNS name and DNS server

Used as a troubleshooting tool to see if DNS server has the correct IP with the correct name

```
C:\>nslookup cisco.netacad.net
Server: TOROON12MSC15.svr.bell.ca
Address: 67.69.184.139

Non-authoritative answer:
Name:   cisco.netacad.net
Address: 128.107.229.50
```

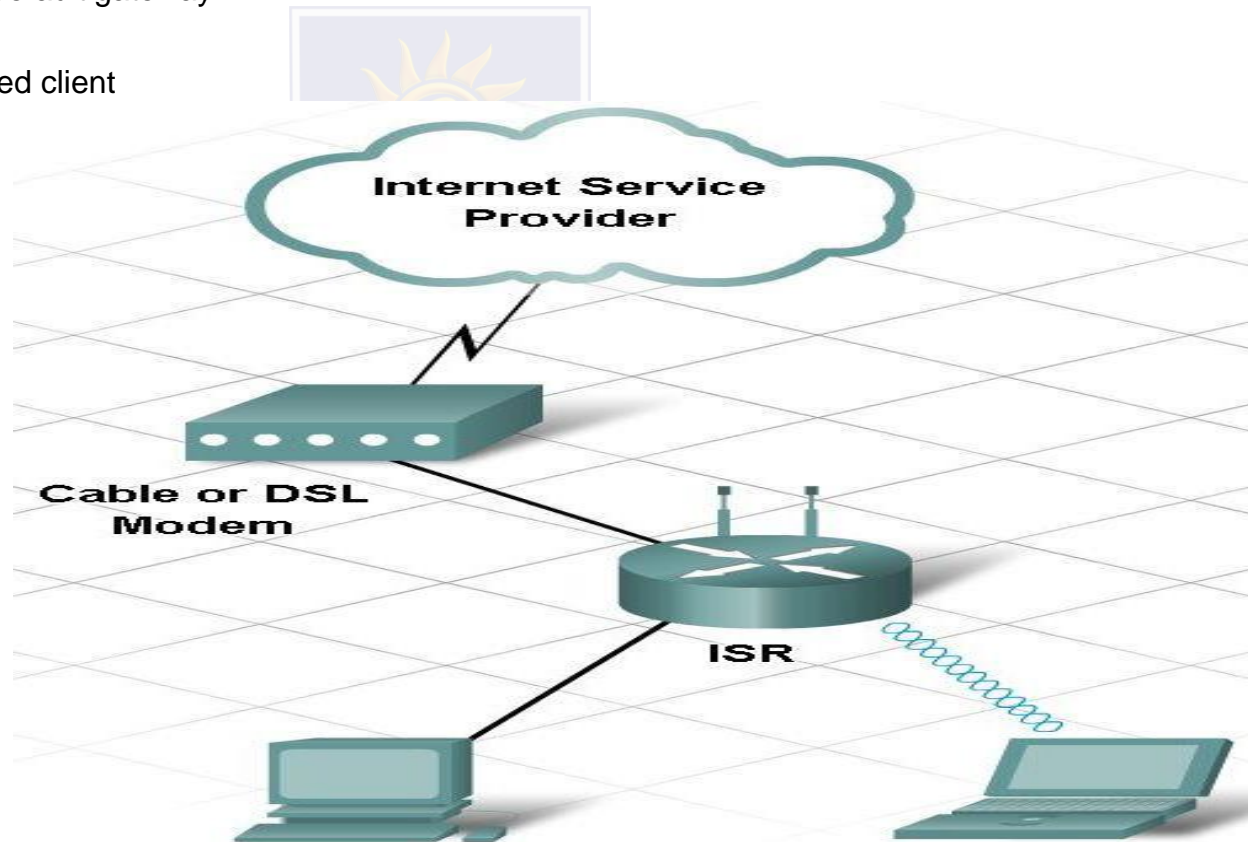


HARDWARE AND CONNECTION ISSUES IN WIRED & WIRELESS NETWORKS

Use divide-and-conquer technique

To determine where the problem exists:

- ping from wireless client to default gateway
- ping from wired client to default gateway
- ping wireless client to wired client



LED INDICATORS

Used to show activity

Security LED

solid green = security enabled

Link Lights

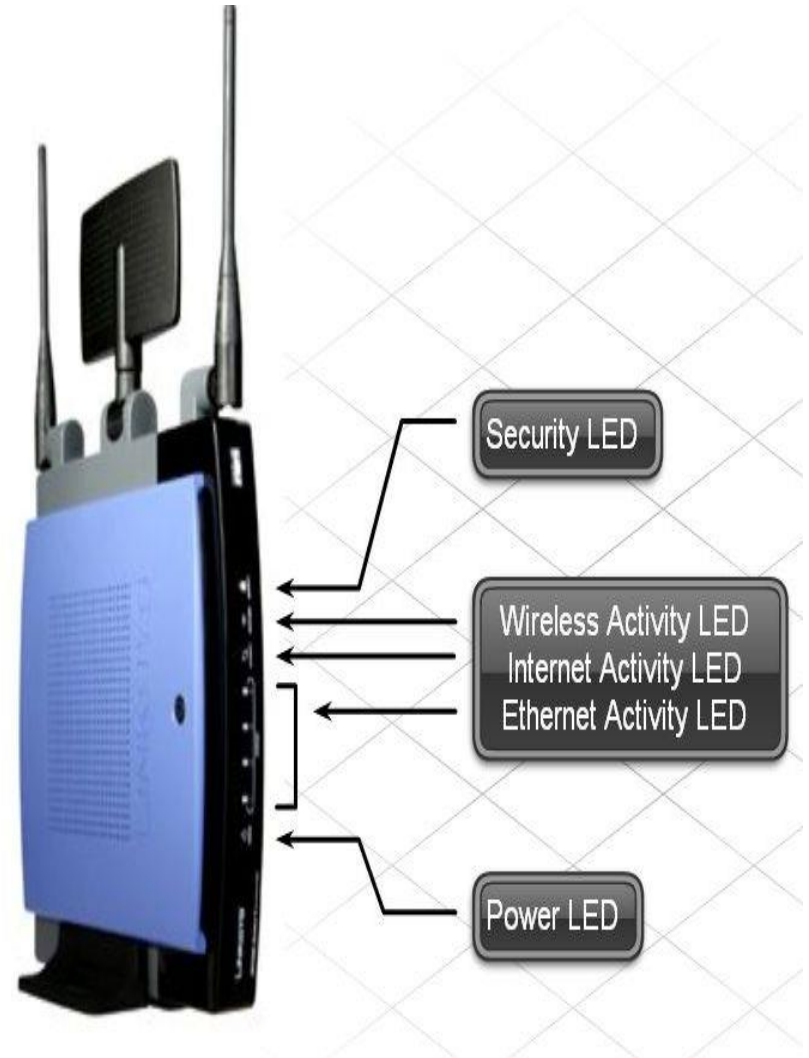
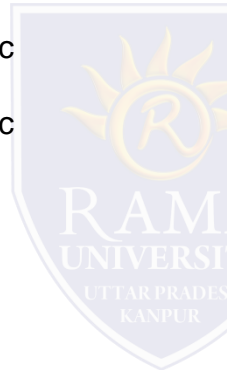
solid green = plugged in with no traffic

flashing green = plugged in with traffic

amber = making adjustments

Power LED

solid green = operational

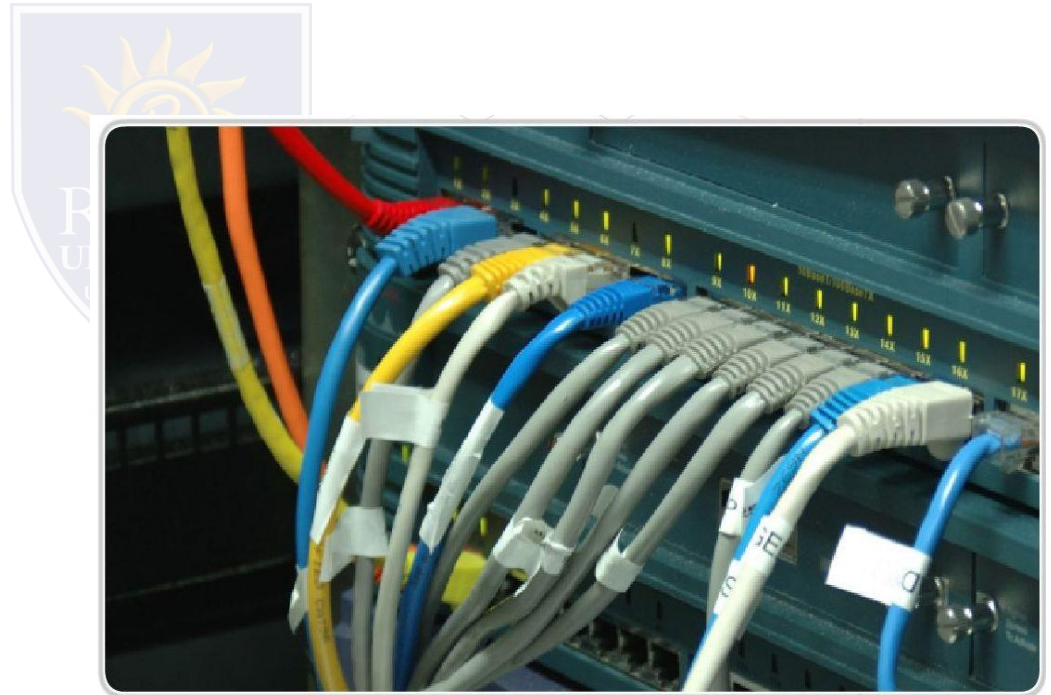


CABLE ISSUES

One of the most common problems

Check for:

- correct cable type
- improper cable termination
- too long of cable runs
- verify correct ports
- protect cables from damage



Multiple Choice Question

MUTIPLE CHOICE QUESTIONS:

Sr no	Question	Option A	Option B	OptionC	OptionD
1	Which one of the following is not used to generate dynamic web pages?	PHP	ASP.NET	JSP	CSS
2	The term that is used to place packet in its route to its destination is called _____	Delayed	Urgent	Forwarding	Delivering
3	A second technique to reduce routing table and simplify searching process is called _____	Network-Specific Method	Network-Specific Motion	Network-Specific Maintaining	Network-Specific Membership
4	Next-Hop Method is used to reduce contents of a _____	Revolving table	Rotating Table	Routing Table	Re-allocate table
5	Several techniques can make size of routing table manageable and also handle issues such as _____	Maturity	Error reporting	Tunneling	Security

REFERENCES

- <http://www.engppt.com/2009/12/networking-fourzan-ppt-slides.html>

