



RAMA
UNIVERSITY

www.ramauniversity.ac.in

FACULTY OF NURSING

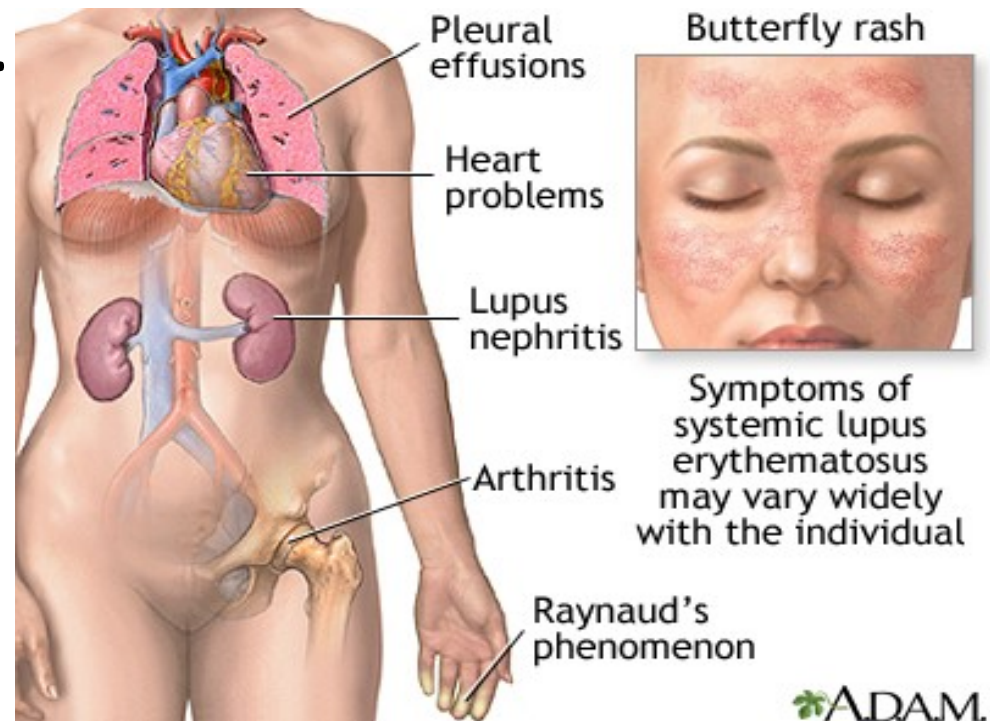


RAMA
UNIVERSITY

Mr. M.Raghavendran M.Sc(N)
Professor
MSN Dept

SYSTEMIC LUPUS ERYTHEMATOSUS

It is a multisystem inflammatory disease of auto immune origin resulting from interactions among genetic, hormonal, environmental and immunologic factors.



Etiology

Exact etiology is unknown.

Genetic influence – HLA- DR3

Hormonal: Onset of Menarche, Use of Oral contraceptives during and after Pregnancy

Environmental factors: Sun Exposure and Sun Burns

Auto Immune Disease

Clinical Manifestations

- CNS:
 - Stroke
 - Seizures
 - Peripheral Neuropathy
 - Psychosis
 - Organic Brain Syndrome.
- Reproductive System:
 - Menstrual Abnormalities

Cont...

- Hematopoietic:

- Anemia
- Leukopenia
- Splenomegaly
- Thrombocytopenia

Musculo Skeletal System:

- Arthritis
- Myositis
- Synovitis

Cont...

- Gastro Intestinal System:
 - Abdominal Pain
 - Diarrhea
 - Dysphagia
 - Nausea and Vomiting
- Urinary System:
 - Glomerulo Nephritis
 - Hematuria
 - Proteinuria

Cont...

- Cardio Pulmonary System:
 - Endocarditis
 - Myocarditis
 - Pericarditis
 - Pleural Effusion
 - Raynaud's phenomenon.
- Dermatological:
 - Alopecia
 - Palmar Erythema



Diagnostic Evaluation

- History Collection & Physical Examination
- Antibodies – anti DNA antibody
 - Anti Sm Antibody
 - Anti Nuclear Antibody
- Complete Blood Count
- LE cell prep

Cont...

- Urinalysis
- X ray of affected joints
- Chest X ray
- ECG

Management

- NSAIDs
- Steroid Sparing Drugs
- Anti-malarials *eg: hydroxyl chloroquinone*
- Corticosteroid
- Immunosuppressive drugs
 - *eg: Cyclophosphamide, Azathioprine*