



**RAMA**  
**UNIVERSITY**

[www.ramauniversity.ac.in](http://www.ramauniversity.ac.in)

**FACULTY OF NURSING**



RAMA  
UNIVERSITY

*DISLOCATION AND*

*SUBLUXATION*

Mr. M.Raghavendran M.Sc(N)

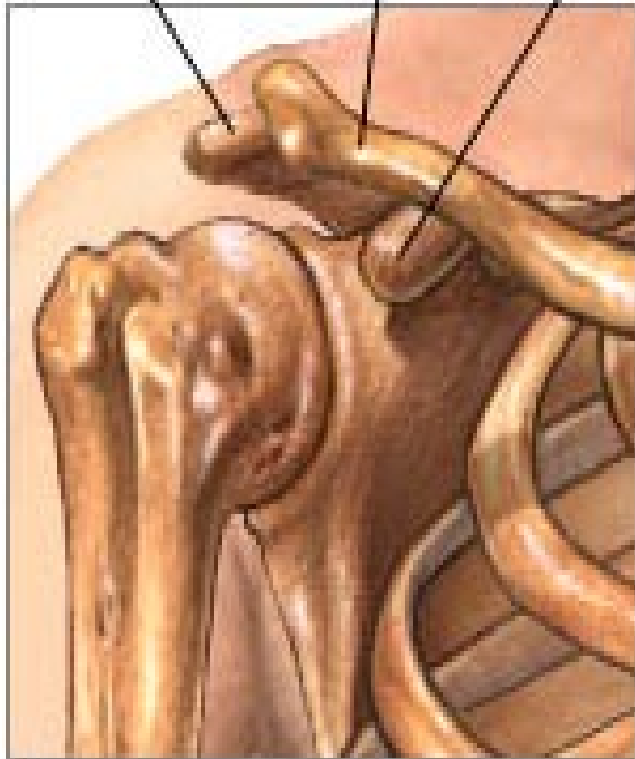
Professor

MSN Dept

# Dislocation

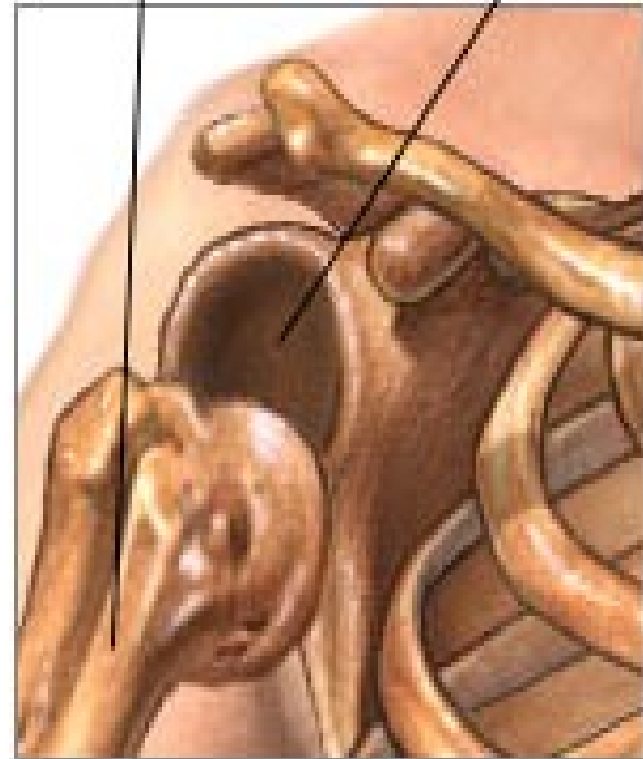
A dislocation is a severe injury to the ligamentous structure that surrounds a joint. Dislocation results in a complete displacement or separation of the articular surfaces of the joint.

Acromion  
Clavicle  
Coracoid



Normal anatomy

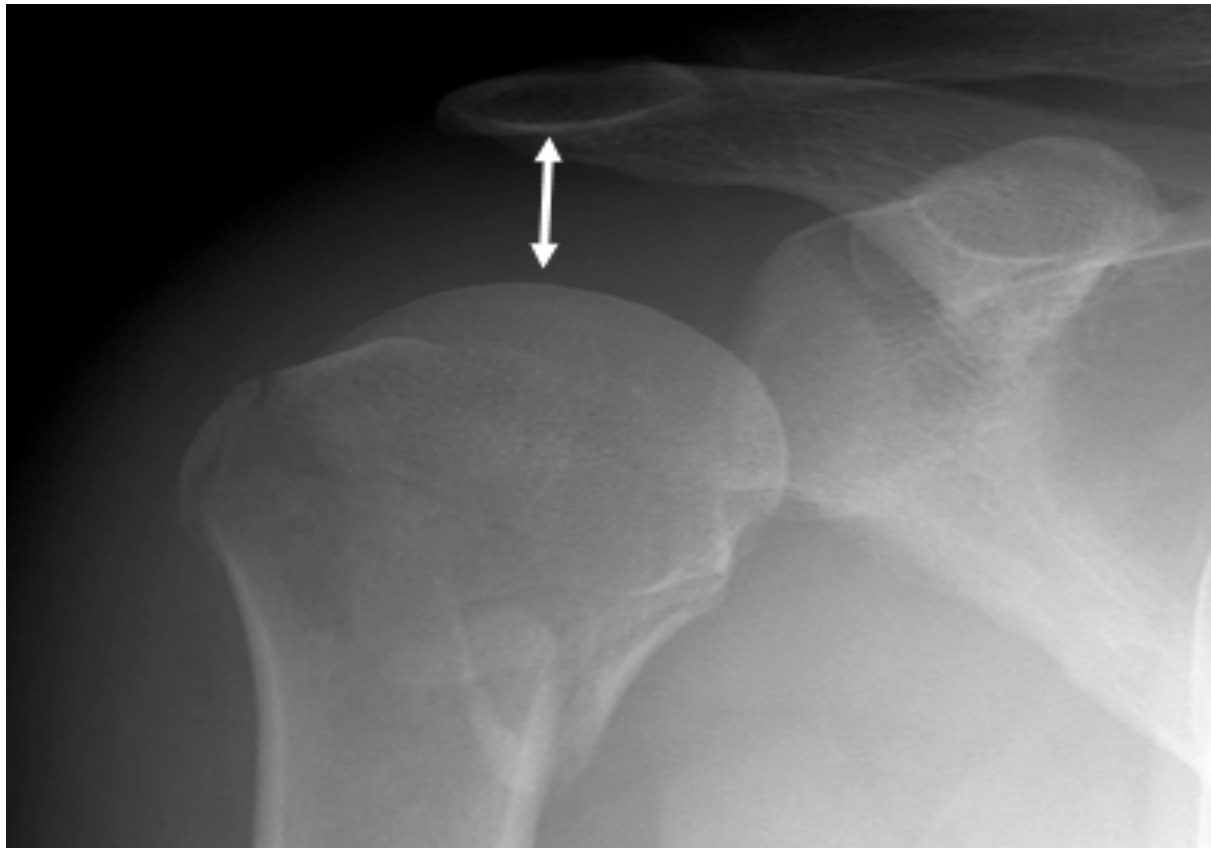
Humerus  
Glenoid



Dislocated shoulder

# Subluxation

A subluxation is a partial or incomplete displacement of a joint surface.



# *Clinical Manifestations*

- Structural deformity
- Local pain
- Tenderness
- Loss of function of injured part
- Swelling of soft tissues.

# *Complications*

Dislocated joint

Intra Articular fracture

Avascular Necrosis

# *Diagnostic Evaluation*

X- ray

History Collection

Physical Examination



# *Management*

- Closed Reduction under Local or General Anesthesia
- Surgical open reduction

After reduction the extremity is usually immobilized by bracing, splinting, taping.