



RAMA
UNIVERSITY

www.ramauniversity.ac.in

FACULTY OF NURSING



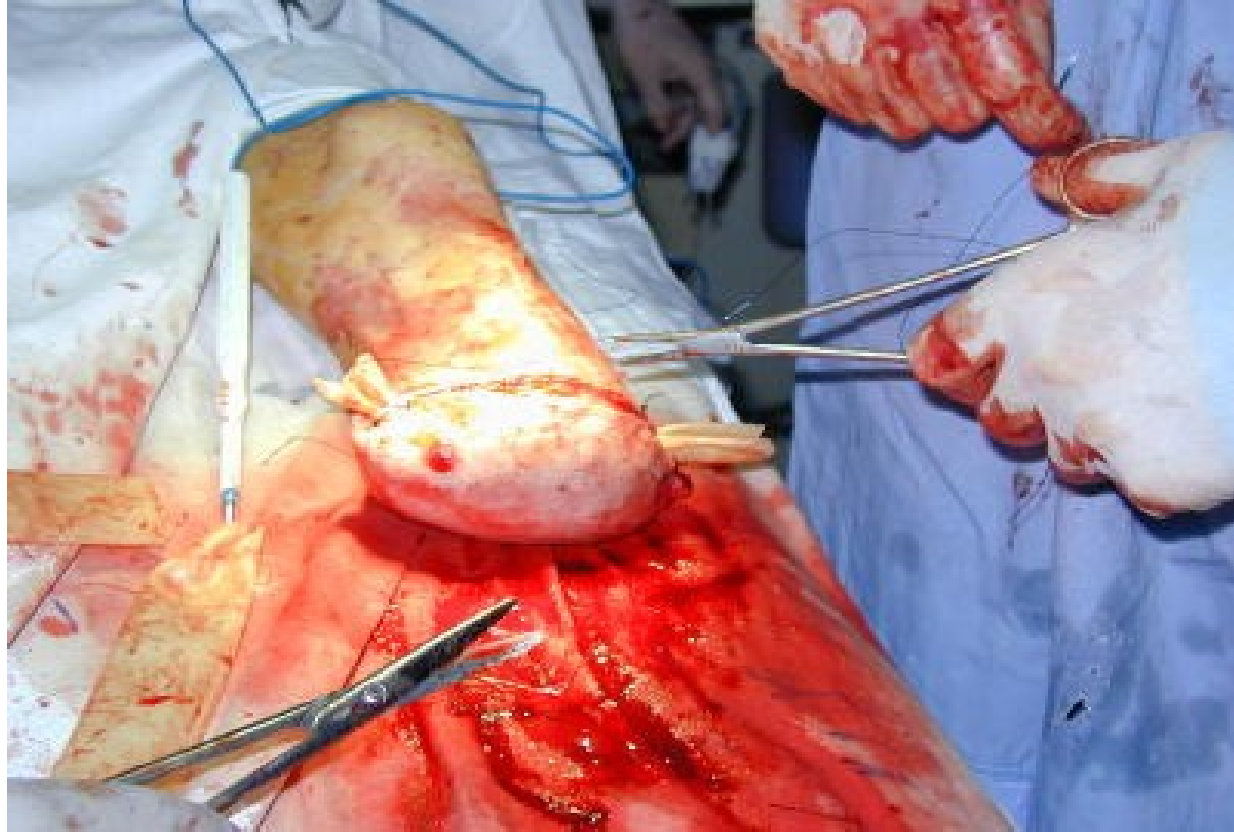
**RAMA
UNIVERSITY**

AMPUTATION

Mr. M.Raghavendran M.Sc(N)
Professor
MSN Dept

Definition

A surgical
ex: Breast



Indications

- Circulatory impairment resulting from PVD
- Traumatic and Thermal Injuries
- Malignant Tumors
- Uncontrolled or Wide spread infection of extremity and
- Congenital disorders.

Diagnostic Evaluation

History Collection and Physical Education

Skin temperature

Decreased sensory function

Peripheral pulse

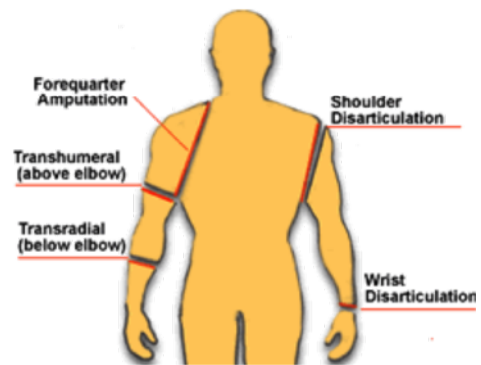
Arteriography

Venography

Cutaneous ultrasonic doppler recordings.

Management

The goal of amputation surgery is to preserve extremity length and function while removing all infected pathologic or ischemic tissue.



Cont...

Upper ex
– Shou

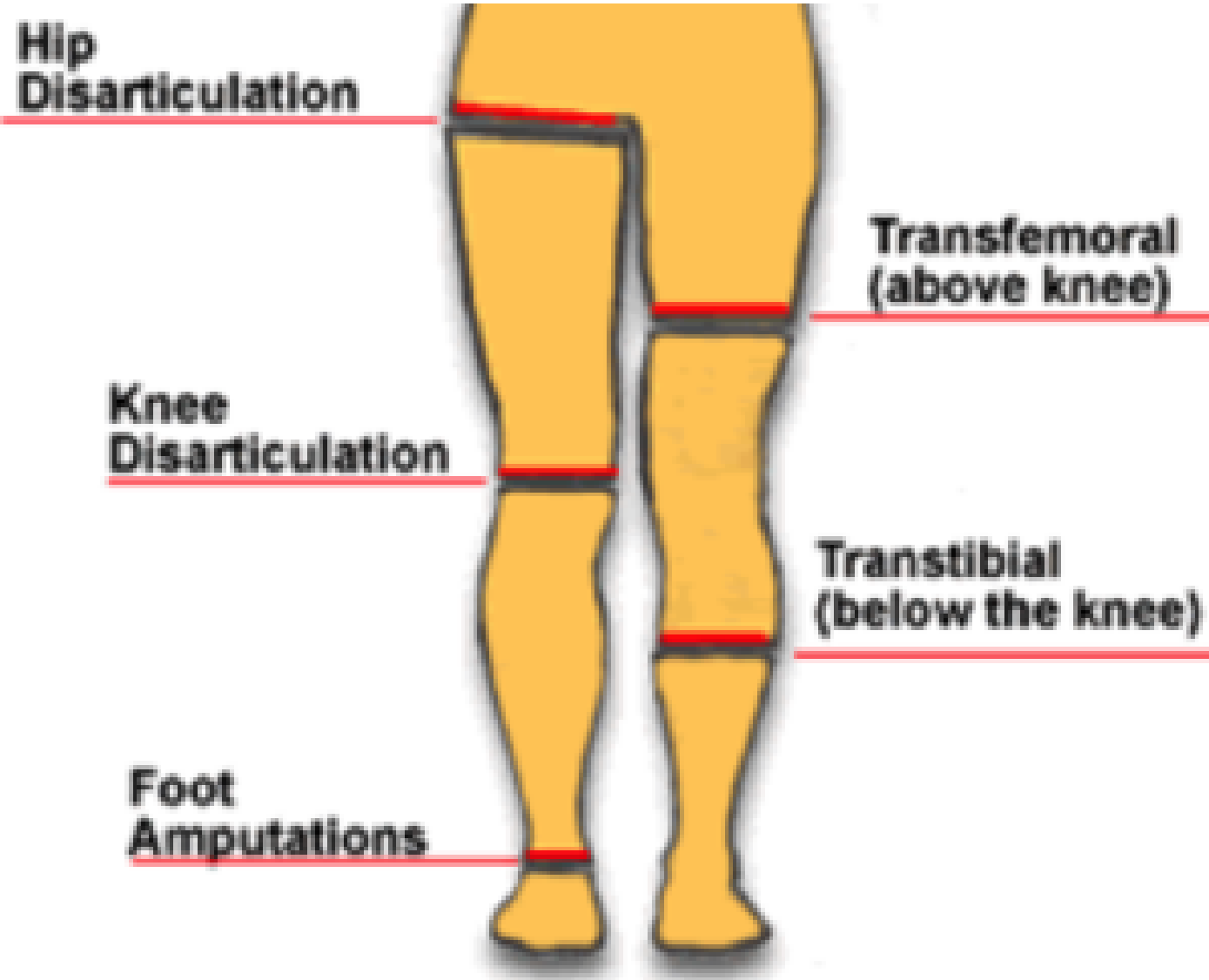


- Above Elbow Amputation
- Elbow Disart
- Below Elbow





Cont...



**Hip
Disarticulation**

**Transfemoral
(above knee)**

**Knee
Disarticulation**

**Transtibial
(below the knee)**

**Foot
Amputations**

Co

Lower Extremity

- Hemipelvectomy
- Hip Disarticulation



Cont...



Cont...

– Below Knee Amputation



out



Complication

Phantom limb sensation: the patient should be warned that he or she may feel though the amputated limb is still present after surgery.

Patient Teaching

- Inspect limb for skin irritation
- Discontinue using the prosthesis if an irritation develops
- Wash residual limb thoroughly each night with warm water
- Do not use any substance such as lotions and oils

Cont....

- Wear only limb soak
- Use prescribed pain management
- Perform ROM to all joints
- Do not elevate the residual limb on a pillow